

INSTALLATION GUIDE
ALUMATE
NON COMBUSTIBLE
ALUMINIUM
SCREENING

INSTALLATION GUIDE

ALUMATE

NON COMBUSTIBLE

ALUMINIUM SCREENING

STORAGE & HANDLING

- Always handle Alumate Products with care. Do not dump or drop when loading or unloading.
- Profiles should be carried on their edge for better support. Take care of cut board ends as they may be sharp.
- Store Alumate Products away from the elements on a dry, flat surface supported at maximum 450mm centres.
- When removing Alumate profiles from the pack do not slide boards against each other, lift the boards and set them down carefully. When handling take care to avoid scratches, nicks and other damage to the boards.
- To ensure long-term performance we recommend that a professional tradesperson carry out the installation in accordance with these instructions, including the use of all trims and accessories.

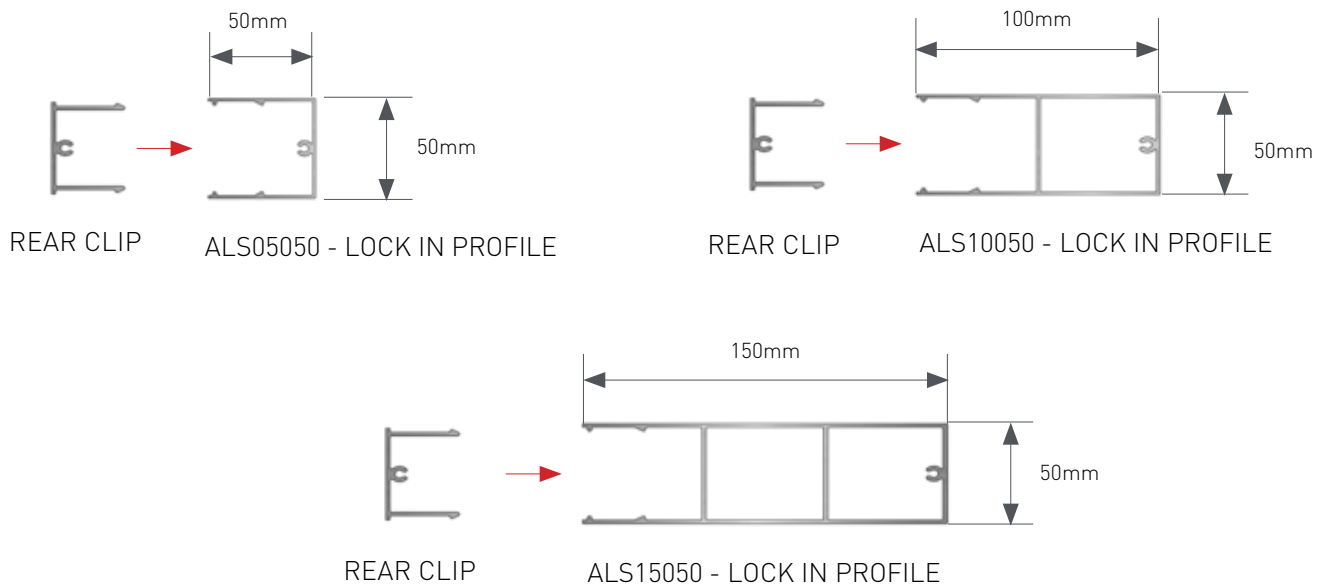
FRAMING NOTES

Support Sub framing must be in line with AS Timber framing must comply with AS 1684: Timber Framing Code. Steel framing must comply with AS/NZS 4600: Cold-Formed Steel Structure or AS 3623: Domestic Metal Framing.

- BCA Volume 2
- 3.4.2 Steel Framing
- 3.5.2 Wall Cladding
- 3.4.3 Timber Framing



PROFILES



INSTALLATION NOTES

Use appropriate screws as per the table below and ensure that the head does not exceed the fixing area.

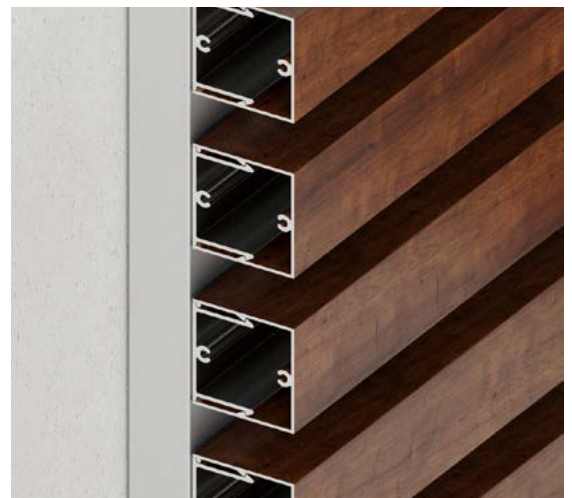
BACK STRUCTURE	SCREW TYPE
SEASONED TIMBER	10G x25MM TYPE 17 WAFER HEAD
STEEL FRAMING	10G X 16MM SELF-DRILLING WAFER HEAD

Aluminium expands and contracts with temperature changes, therefore it is essential that fixings are staggered on either side of the screw flute of the rear clip.

When installing on to steel support sub frames, ensure to use a non-compressible separation tape between the dissimilar metals.

Use appropriate cutting saws suitable for aluminium and ensure they are sharp to reduce the chance of burrs.

To avoid damaging the finish, always use care and a piece of timber with a rubber mallet to lock the profiles together, if required.



INSTALLATION NOTES

Ensure you level the sub structure/frame that the rear clip is to be installed onto as the final installation will follow this level.

Check to make sure that the following maximum fixing spans are achieved according to the batten profile being used.

ALS05050 - 750mm centres

ALS10050 - 600mm centres

ALS15050 - 450mm centres

Always take care with the set out of the rear clip in terms of spacings batten spacing to ensure that the desired finish is achieved.

Level and fix the rear clip by staggering the fixings on either side of the screw flute of the rear clip.

Position the batten and ensure that it is aligned with the rear clip before pushing on. a firm lock in place is achieved once the profile is properly seated over the rear clip with a confident click.

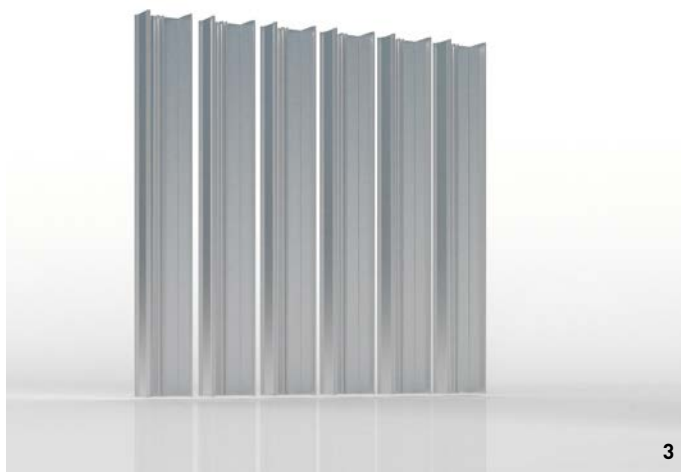
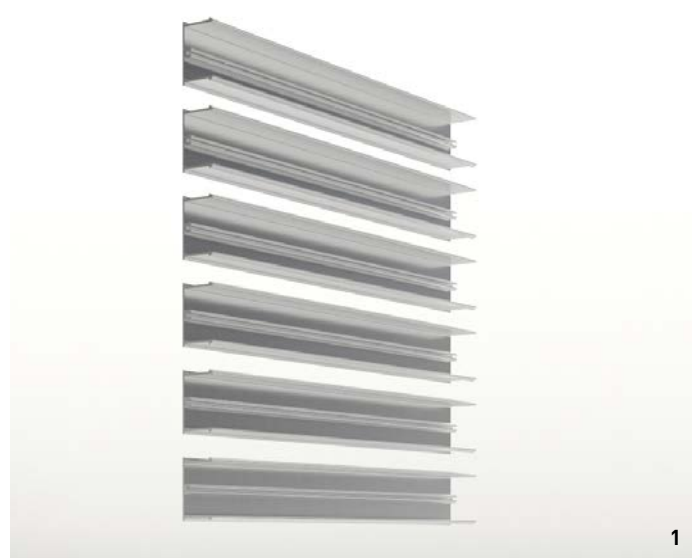
Continue the installation ensuring that each batten is properly aligned and completely locked into place.

FIG 1 - HORIZONTAL REAR CLIP

FIG 2 - HORIZONTAL WITH ALUMATE LOCK IN PROFILE

FIG 3 - VERTICAL REAR CLIP

FIG 4 - VERTICAL WITH ALUMATE LOCK IN PROFILE



NOTES

[illegible]



Phone (australia) : 1300 654 795 Email : enquiry@innoarc.com.au
Office : 126 O'Connell Street, North Parramatta, NSW 2151
Website : www.innoarc.com.au