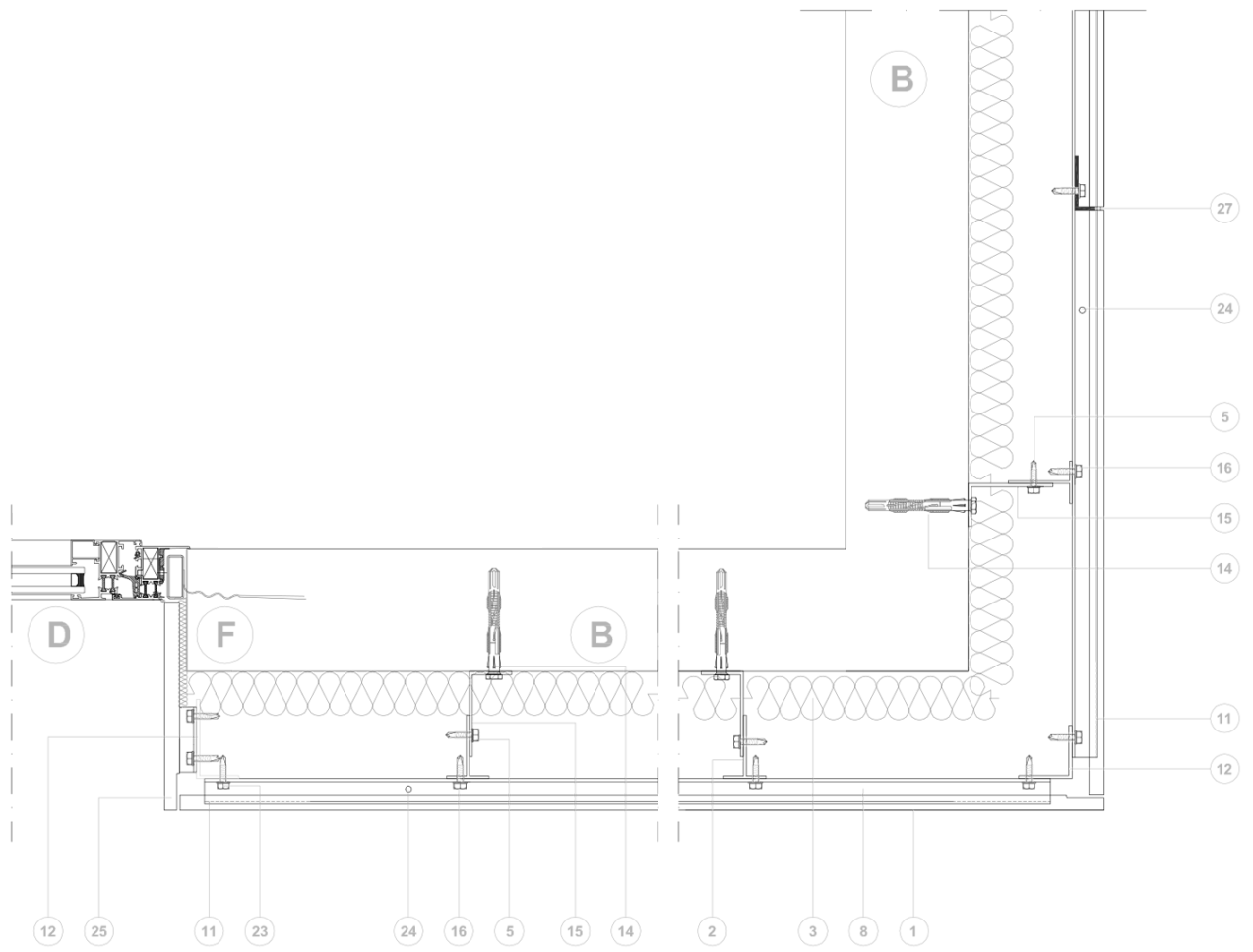
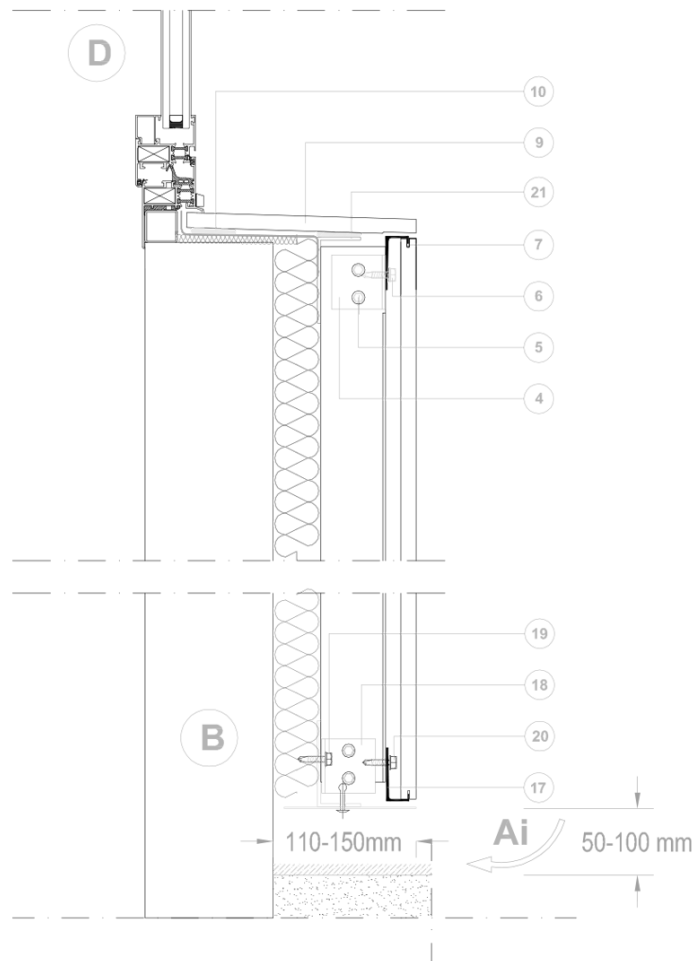
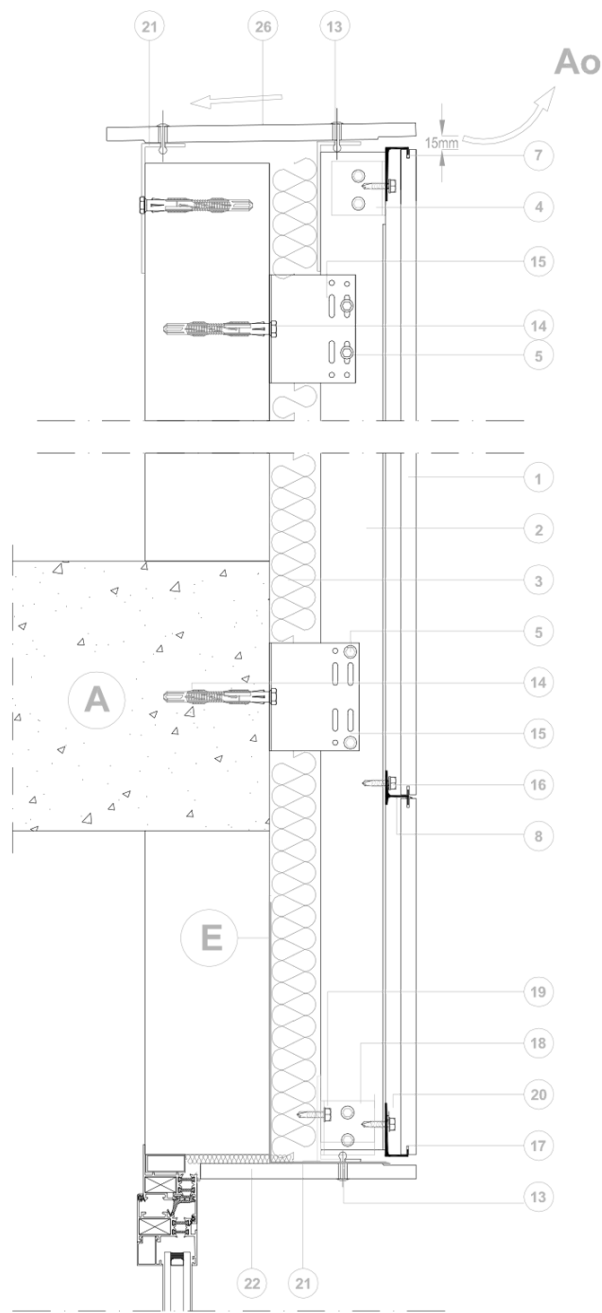


VENTILATED FAÇADE - VANGUARD HORIZONTAL SYSTEM



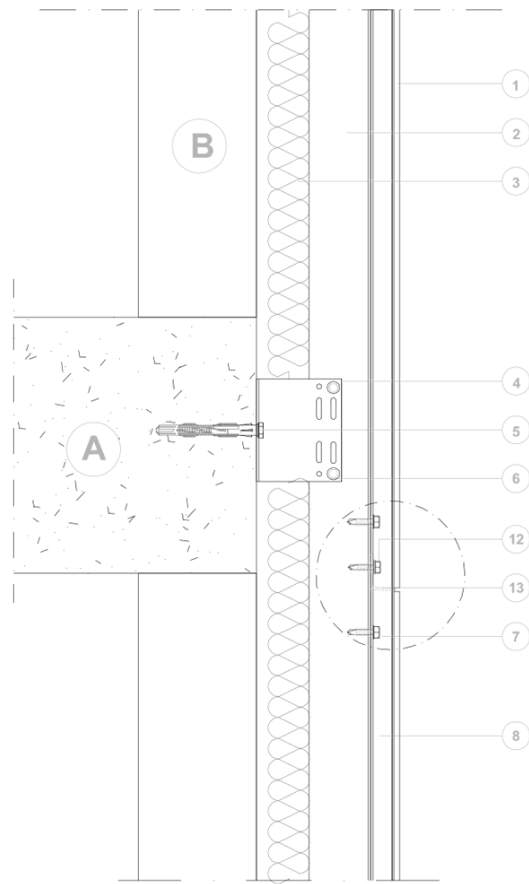
HORIZONTAL SECTION

- A: FLOOR SLAB
 - B: BASE WALL
 - C: SILL WATERPROOFING WITH EPDM MEMBRANE OR SIMILAR
 - D: WINDOW
 - E: LINTEL WATERPROOFING WITH EPDM MEMBRANE OR SIMILAR
 - F: JAMB WATERPROOFING WITH EPDM MEMBRANE OR SIMILAR
 - Ai: AIR INLET
 - Ao: AIR OUTLET
- 1: Polymer concrete ventilated façade panel by Ulma
 - 2: Vertical T-rail (sub-frame)
 - 3: Thermal insulation
 - 4: Support angle for inverted starter rail profile connection to upright
 - 5: Self-drilling screw for carrier wall bracket or support angle connection to upright
 - 6: Self-drilling screw for support angle connection to inverted starter rail profile
 - 7: Ulma inverted starter rail profile
 - 8: Ulma Continuous intermediate rail profile
 - 9: Polymer concrete windowsill by Ulma
 - 10: Silicone adhesive for Polymer concrete windowsill by Ulma
 - 11: Anti-Movement structural silicone at corner panel
 - 12: Support angle for corner
 - 13: Rivet
 - 14: Connection at floor slab and base wall
 - 15: Carrier bracket to floor slab and base wall
 - 16: Self-drilling screw for rail profile connection to upright
 - 17: Ulma starter rail profile
 - 18: Anchorage angle for L profile connection to upright
 - 19: Self-drilling screw for L profile connection to support angle
 - 20: Self-drilling screw for starter rail profile connection to upright
 - 21: L profile
 - 22: Polymer concrete lintel by Ulma
 - 23: Self-drilling screw for support angle for corner connection to rail profile
 - 24: Weep hole
 - 25: Polymer concrete window jamb by Ulma
 - 26: Polymer concrete coping by Ulma
 - 27: Locking piece

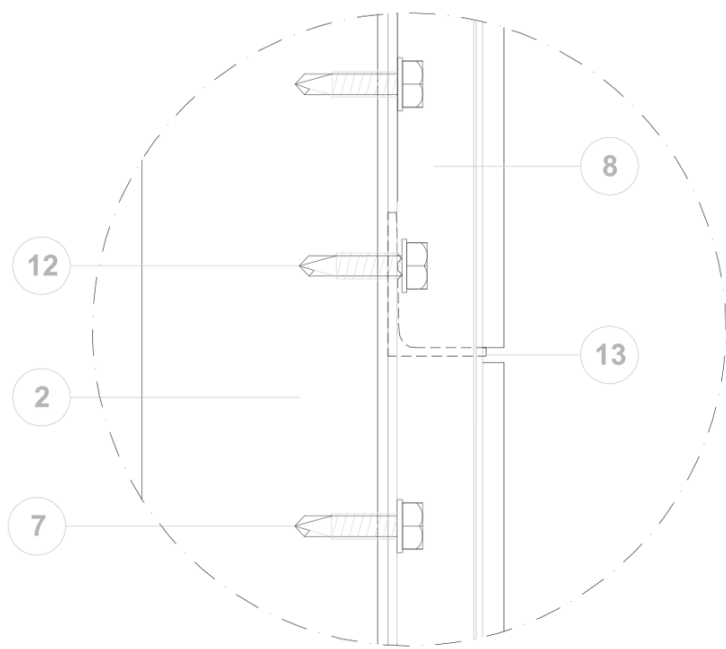
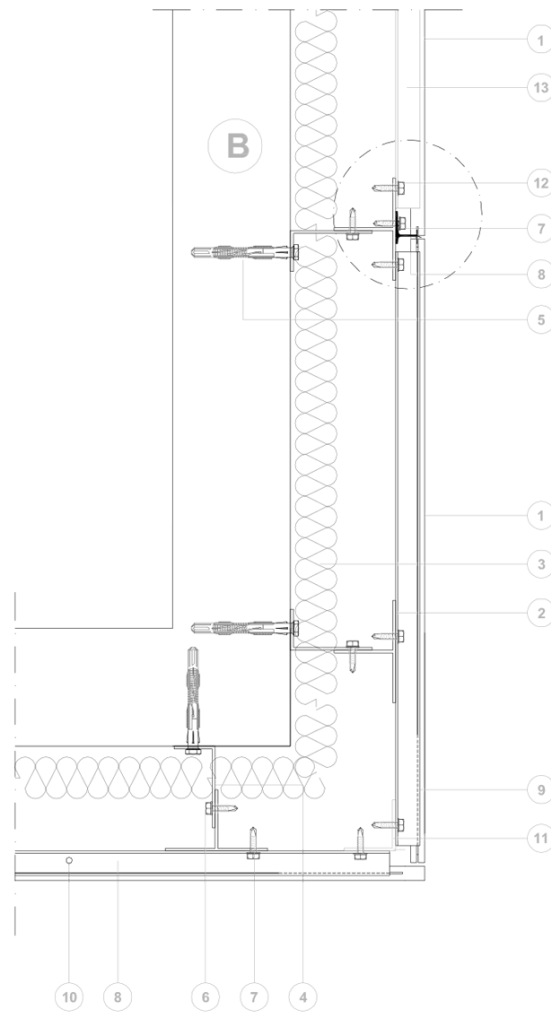
VERTICAL SECTION

VENTILATED FAÇADE - VERTICAL SYSTEM

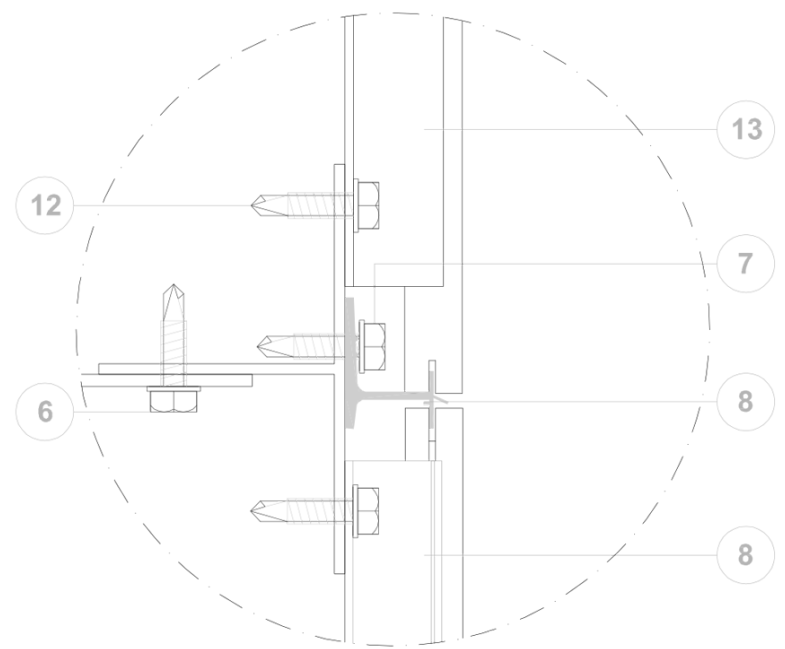
VERTICAL SECTION



HORIZONTAL SECTION



DETAIL VERTICAL SECTION



DETAIL HORIZONTAL SECTION

A: FLOOR SLAB
B: BASE WALL

- 1: Polymer concrete ventilated façade panel by Ulma
- 2: T-rail (vertical sub-frame)
- 3: Thermal insulation
- 4: Carrier bracket to floor slab and base wall
- 5: Connection at floor slab and base wall
- 6: Self-drilling screw for carrier wall bracket connection to upright
- 7: Self-drilling screw for rail profile connection to upright
- 8: Ulma Intermediate continuous rail profile
- 9: Anti-Movement structural silicone at corner panel
- 10: Weep hole
- 11: Support angle for corner
- 12: Self-drilling screw for support rail profile connection to upright
- 13: Ulma support rail profile

Vertical System Profiling Diagram

